

## Involvement:

We invite members to become involved in the districts and the area. Most importantly, AA service needs as many group General Service Representatives (GSRs) as possible: to give their groups a voice.

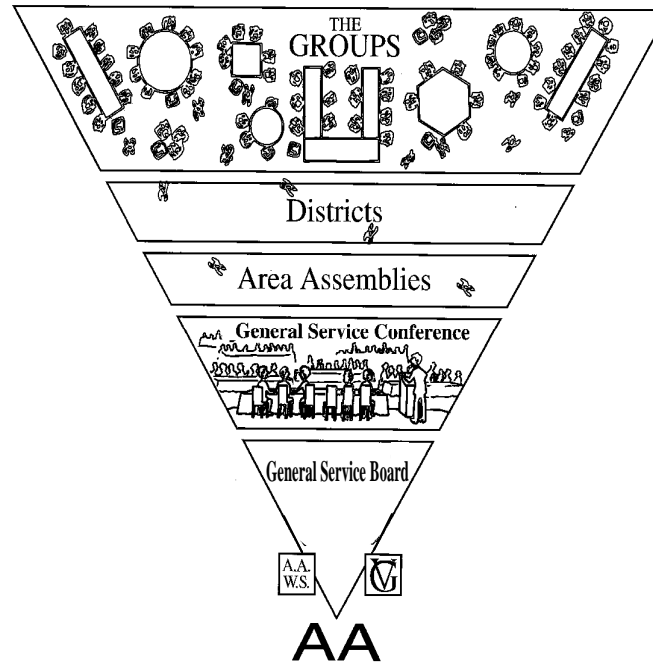
Attend one of your monthly district meetings. Check out the assembly. These are great ways to “test drive” service work and grow in your recovery. The districts and the area needs volunteers for committees: Correctional Facilities (CF), Treatment Facilities, Grapevine, Public Information (PI), Cooperation with the Professional Community (CPC), Archives, Special Needs/Accessibility (SN/A), Bridging-the-Gap (BTG), Area and District Newsletters, Webmaster, Missouri State Convention Committee, etc.

To find out more: call or visit our area website [eamo.org](http://eamo.org) or contact your district. Here you can connect with districts, committees and area officers.

Archives welcomes your group histories, and thanks the groups who have already participated. Please do not discard district and group items – flyers, copies of records such as group inventories, etc. – send to Archives.



## General Service Structure of the Conference: US and Canada



### Missouri Eastern Area AA

14 Sunnen Drive, Suite 144  
Maplewood, MO 63143  
Phone: 314-644-1130  
Web: [eamo.org](http://eamo.org)  
See website for E-mail addresses

### Assembly every 3 months:

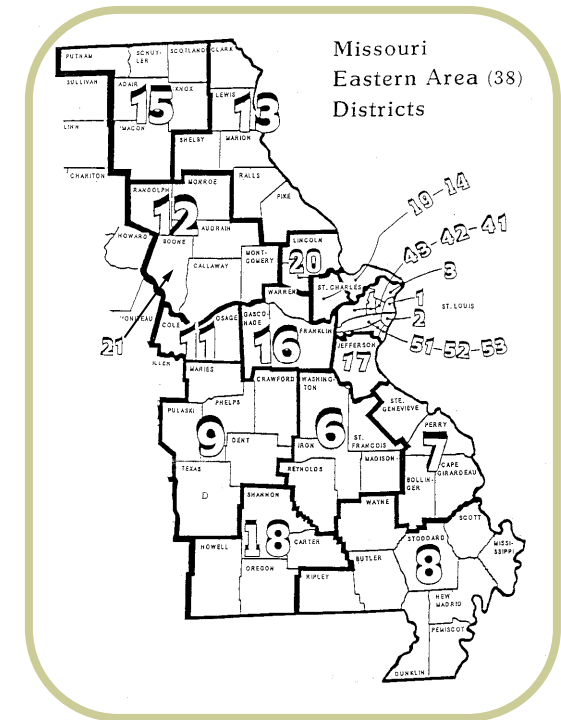
Holiday Inn (Viking), 10709 Watson Rd.,  
Sunset Hills, MO 63127  
For 2014: Jan. 25, Mar. 22, Jul. 12, Oct. 4 & 5

### Missouri Eastern Area Archives

14 Sunnen Drive, Suite 144  
Maplewood, MO 63143  
Phone: 314-644-1130  
E-mail: [archives@eamo.org](mailto:archives@eamo.org)  
Open: 1st Wed/month, 1PM - 6PM  
3rd Sat/mo. working session  
10AM - 12N

EAMO

## Welcome to Area 38 Eastern Missouri AA Office and Archives



Tel: 314-644-1130

*Serving Eastern  
Missouri AA*

## What is the Eastern Area of Missouri AA (EAMO)?



Area 38 is composed of all of the AA Groups in the Eastern Missouri Area. We are a part of the General Service Structure. Our area has (in 2012) 565 groups registered with the General Service Office (GSO). These groups combine to form 24 districts. The Eastern

Area (#38) is comprised of these 23 geographical districts plus our area-wide Spanish-speaking district (District # 21). The purpose of the area is to serve AA members and groups throughout Eastern Missouri as a part of the General Service Conference structure.

The Missouri Area was formed in 1951. In 1957, it divided into 2 parts: the Eastern Area and Western Area. In 1974, our Area Archives was established.

Group General Service Representatives (GSRs), district members, and interested AA members meet for quarterly assemblies to discuss AA business, participate in workshops and network with AAs around the area.

All AA members are welcome to attend our area assemblies.

In addition to quarterly assemblies, GSRs usually meet monthly at district meetings. The groups and their members, especially the groups' GSRs, are the most important part of the area structure.

Our GSRs bring the vital voice of their groups to our district meetings, assemblies, and to the AA General Service Conference.

## Archives

Archives is an active part of the Eastern Area.



1. It organizes and houses historical AA literature, artifacts, documents and histories – group, district, area – from around E. Missouri.
2. It is the repository of records, such as business minutes of the groups, districts, and area.
3. Archives volunteers help members to research records.
4. Archives provides an AA library area for members.



The Archives reading area is available for reading documents, listening and viewing tapes and discs.

Several major Archives projects are: compiling group histories from around the area, digitizing archival records, and updating our area history.

From the group to the General Service Board, there are many lines of communication. Each Spring, an elected delegate from each of the 93 areas in the US and Canada meet together at the General Service Conference to discuss the matters and concerns of AA. We are Area 38. The group input is communicated to the delegate and the Conference. The delegates then report back to their areas and the GSRs report back to their groups the matters discussed at the Conference.

Our Area (38) and Western Missouri (Area 39) join together each Summer for our Missouri State Convention.



## What is the purpose of the Area?

In the earliest years of the General Service Conference structure, area assemblies in the U.S. and Canada were held primarily to elect new area officers and a new delegate to the Conference in New York City (first held in 1951). Over time, the Areas have added many more activities.

Our Eastern Missouri Area links the groups and the General Service Conference in New York, and is involved – as are the districts and groups – with many services: outreach to professionals and the public, work with corrections, treatment centers, alcoholics with special needs, etc.

Our area committees involved with these services help as a resource for the districts and the groups. The primary work of the committees is done in the groups and districts. All committee members – and any AA member interested in learning about AA committees – meet at the area quarterly assemblies and at district meetings (and often in-between).

As with any part of the General Service Structure all of our work in the Eastern Area focuses on our primary purpose: service to help carry the message to the still suffering alcoholic. We also work to enhance unity with all of our Eastern Missouri AA groups and districts.

### Responsibility Declaration:

*I am responsible. When anyone, anywhere, reaches out for help, I want the hand of AA always to be there. And for that: I am responsible.*

### Missouri Eastern Area AA

14 Sunnen Drive, Suite 144  
Maplewood, MO 63143  
Phone: 314-644-1130  
Web: eamo.org

### Missouri Eastern Area Archives

14 Sunnen Drive, Suite 144  
Maplewood, MO 63143  
Phone: 314-644-1130  
E-mail: archives@eamo.org