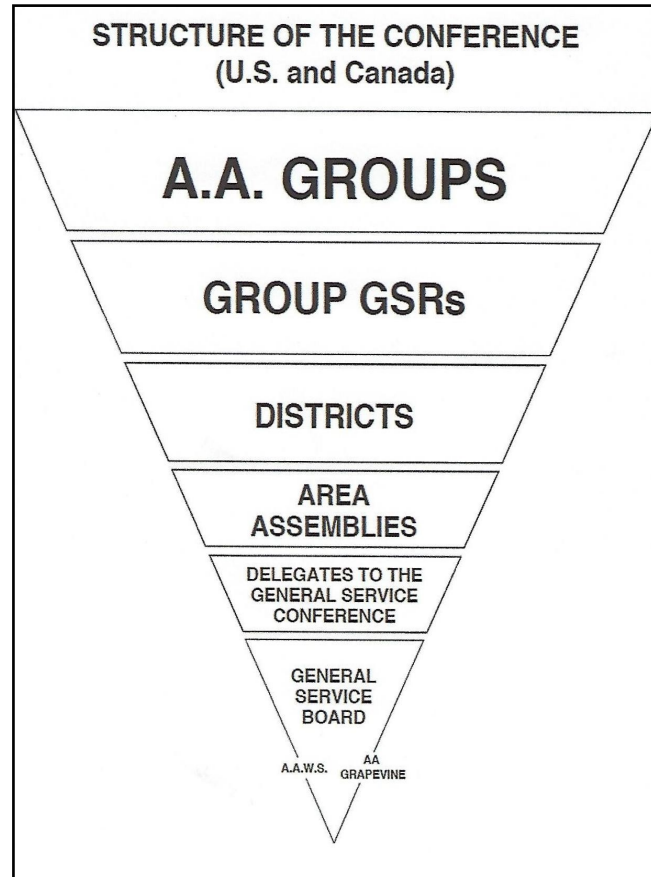


## HOW A.A.'s VITAL MESSAGE IS CARRIED

Today, much of the EAMO work with alcoholics and the professionals who communicate with them takes place in District Committees, such as **Corrections and Treatment**, which takes A.A. meetings into correctional and treatment facilities; **Bridging the Gap**, which arranges for A.A. members to introduce an interested individual recently released from treatment or correctional facilities to A.A.; **Grapevine**, which informs interested A.A. members and others of the Grapevine Magazine and its stories of recovery; **Cooperation with the Professional Community (CPC)**, which works with professionals who work with alcoholics; **Public Information (PI)**, which works with the public media to communicate A.A.'s program to the public; **Accessibility**, which ensures that A.A. is accessible to all who may have physical challenges; **Technology**, which works to carry the message of A.A. through the use of technology; **Gratitude Gazette**, which publishes a quarterly newsletter; and **Archives**, which works to collect and preserve items that reflect our local A.A. history. Each of these committees meets monthly at the district meetings and quarterly at the Area Assemblies where they share their work and project ideas.

**I am responsible...  
When anyone, anywhere  
reaches out for help, I want the  
hand of A.A. always to be there.  
And for that: I am responsible.**



## A DECLARATION OF UNITY

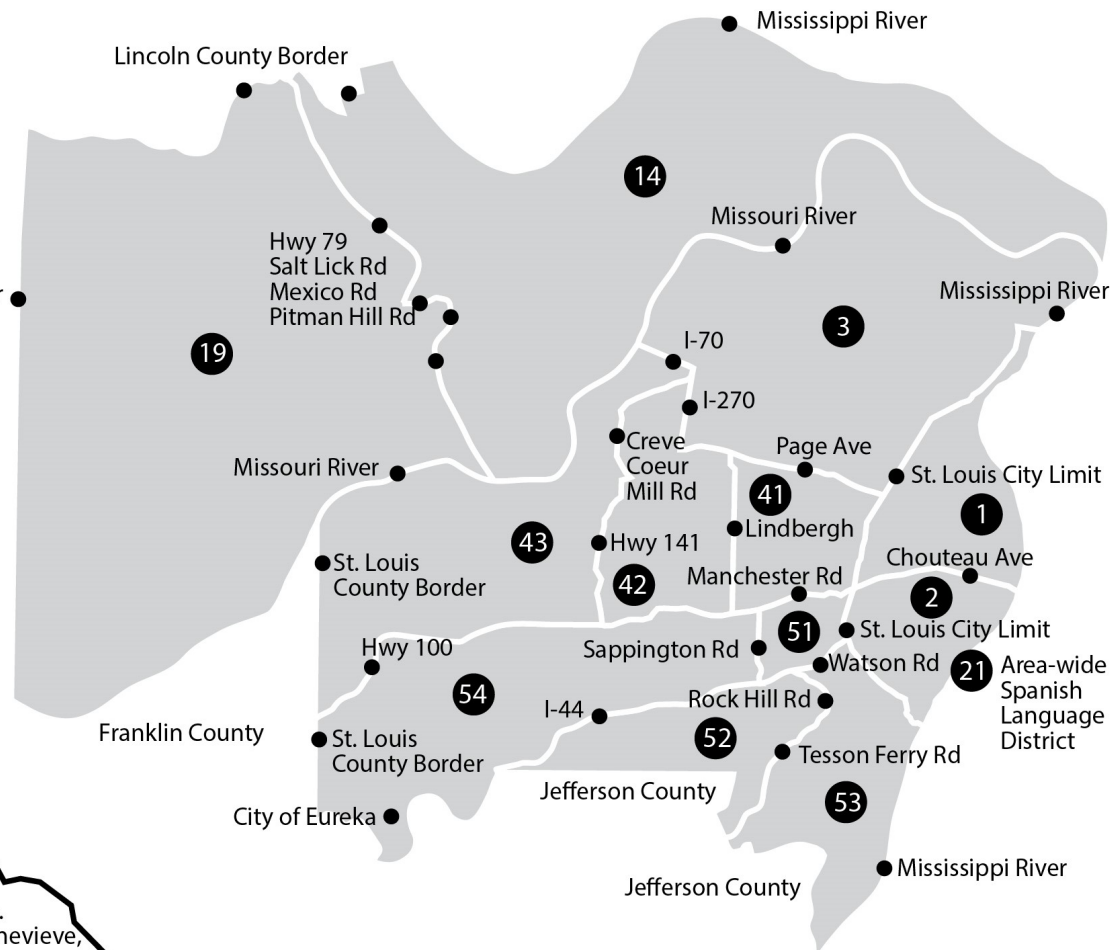
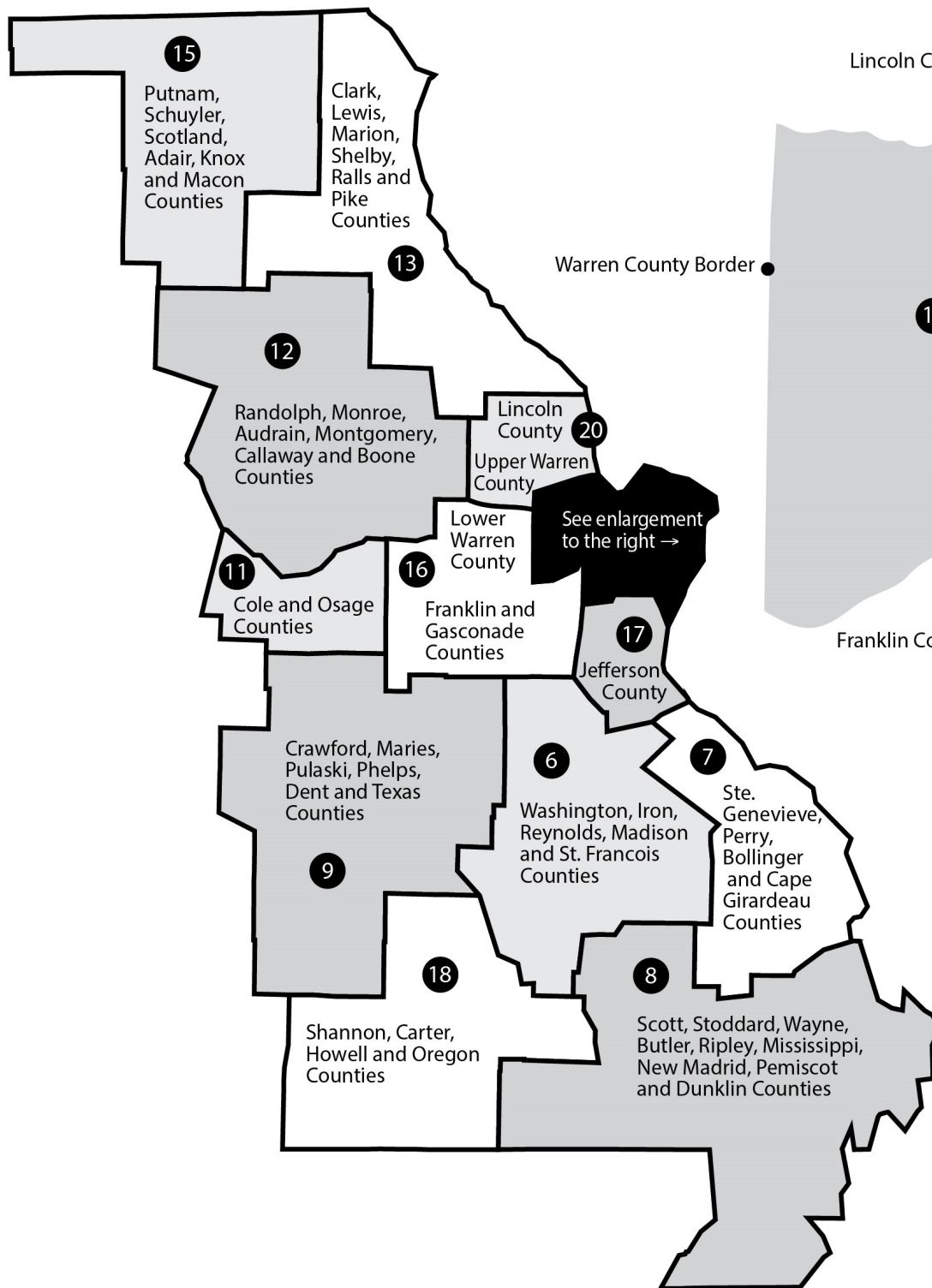
**This we owe to A.A.'s future:  
To place our common welfare first;  
to keep our fellowship united.  
For on A.A. unity depend our lives  
and the lives of those to come.**

**Alcoholics Anonymous**  
Area 38 • EAMO



Area 38, the Eastern Area of Missouri (EAMO), is one of 93 geographical A.A. Areas in the United States and Canada. Missouri was designated one Area in 1951 and was divided into two Areas (Eastern and Western) in 1957, as a result of the rapid growth of A.A. membership. Each Area elects a Delegate who carries their collective Area's voice to the A.A. General Service Conference held in New York each spring. Areas hold an important middle position in the A.A. Conference structure. Through the elected Delegates, each Area participates in decisions that determine the direction and administration of the affairs of A.A. World Service and the A.A. Grapevine. Today, the EAMO consists of over a thousand A.A. groups.

**Eastern Area Missouri  
14 Sunnen Drive, Suite #144  
Maplewood, MO 63143  
Website: [eamo.org](http://eamo.org)  
Emails: [chair@eamo.org](mailto:chair@eamo.org)  
[secretary@eamo.org](mailto:secretary@eamo.org)  
[delegate@eamo.org](mailto:delegate@eamo.org)**



## Area 38 Districts

Area 38 consists of the Eastern Area of Missouri (EAMO) A.A. and is divided into 25 Districts, including one Spanish-speaking district. Each quarter of the year, all of the EAMO districts gather at one location to hold an Area Assembly where representatives of the Groups, Committees, and Area officers work together to ensure that A.A.'s message of experience, strength, and hope is available to all alcoholics in the EAMO.